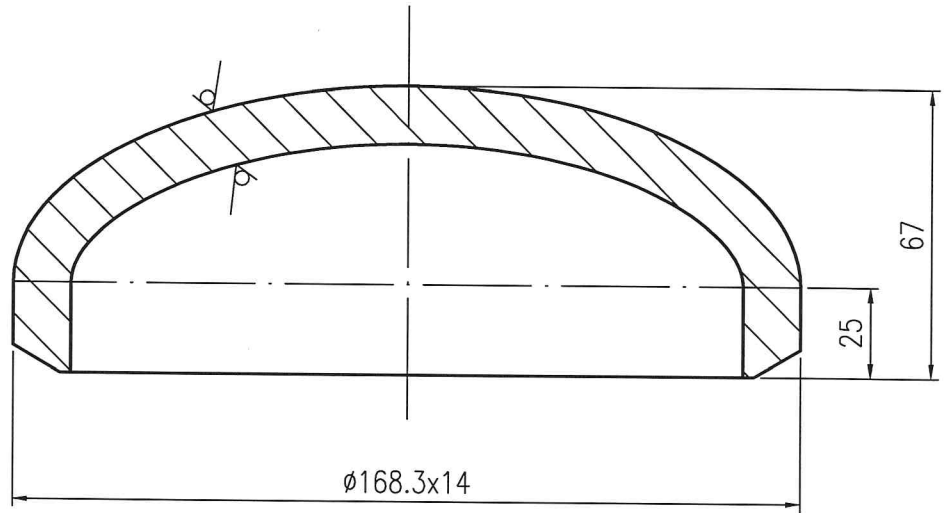
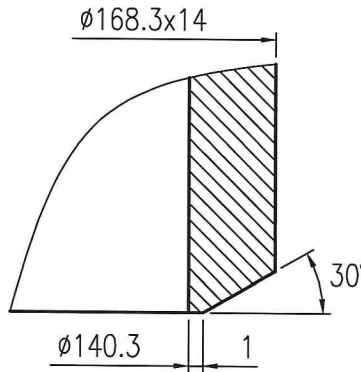


其余²⁵√



端面坡口详图
Detailed drawing of end groove

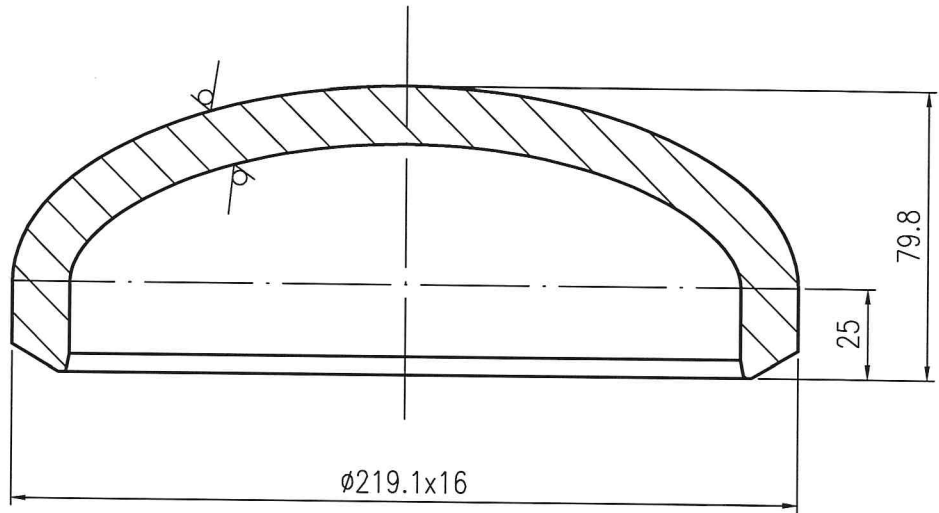
1:1



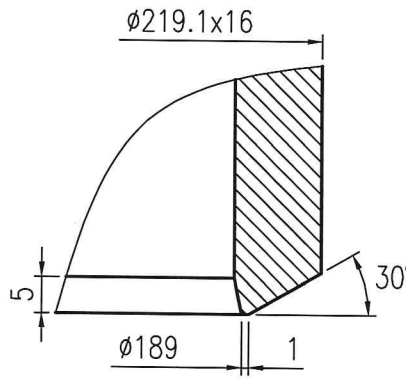
省大器 3/4/45

受控文件

					江苏索普赛瑞装备制造有限公司 Jiangsu SOPO-CERE Equipment Manufacturing CO. Ltd.			集箱封头 $\phi 168.3 \times 15$ HEADER HEAD
					SA-516 Gr.70		15SCG2402-1-2-3-2	
MARK 标记	TOTAL NO. 处数	FILE NO. 更改文件号	SIGN 签名	DATE 日期	WEIGHT(kg) 重量	SCALE 比例		REV. 版次
DESIGN 设计	许大宇 2024.2.19		SERIAL# 产品编号		4.7	1:2	0	
APPROVE 批准	赵晓梅 2024.2.19		24-1004SM3AX/24-1005SM3AX 24-1006SM3AX/24-1007SM3AX		TOTAL-PAGES 共 张	No.-PAGE 第 张		
<p>本图纸及相关文件版权属于江苏索普赛瑞装备制造有限公司所有,任何单位和个人未经江苏索普赛瑞装备制造有限公司书面许可,不得以任何方式复制或扩散至第三方,违者应负相应法律责任。 THIS DRAWING AND RELEVANT DOCUMENT'S COPYRIGHT BELONGS TO SOPO CERE EQUIPMENT MANUFACTURING CO., LTD. THEY MAY NOT BE REPRODUCED OR DISCLOSED TO ANY THIRD PARTY IN ANY FORM WITHOUT THE PRIOR WRITTEN PERMISSION OF Jiangsu SOPO-CERE EQUIPMENT MANUFACTURING CO. LTD. THE OFFENDERS SHALL BEAR THE CORRESPONDING LEGAL RESPONSIBILITY.</p>								



端面坡口详图
Detailed drawing of end groove
1:1



省煤器 30/40

受控文件

技术要求:

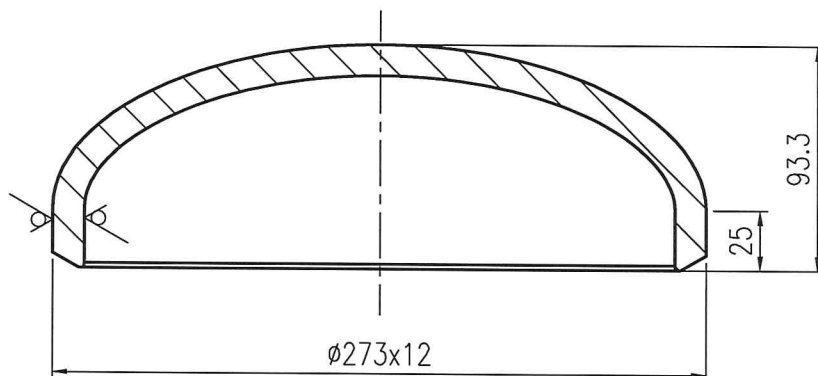
1. 封头成型后最小壁厚不小于14.08mm.

Technical note:

1. Minimum thickness of head after forming should no less than 14.08mm.

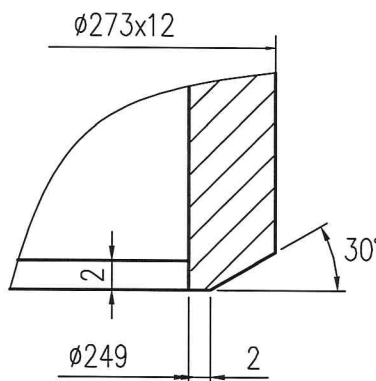
					江苏索普赛瑞装备制造有限公司 Jiangsu SOPO-CERE Equipment Manufacturing CO. Ltd.		
					SA-516 Gr.70		集箱封头 $\phi 219.1 \times 16$ HEADER HEAD
MARK 标记	TOTAL NO. 处数	FILE NO. 更改文件号	SIGN 签名	DATE 日期	WEIGHT(kg) 重量	SCALE 比例	
DESIGN 设计	许大宇 2024.2.19		SERIAL# 产品编号		7.2	1:2	0
APPROVE 批准	赵阮博 2024.2.19		24-1004SM3AS/24-1005SM3AS 24-1006SM3AS/24-1007SM3AS		TOTAL-PAGES 共 张	No.-PAGE 第 张	
					15SCG2402-1-1-1-2		

本图纸及相关文件版权属于江苏索普赛瑞装备制造有限公司所有,任何单位和个人未经江苏索普赛瑞装备制造有限公司书面许可,不得以任何方式复制或扩散至第三方,违者应负相应法律责任。
THIS DRAWING AND RELEVANT DOCUMENT'S COPYRIGHT BELONGS TO SOPO-CERE EQUIPMENT MANUFACTURING CO., LTD. THEY MAY NOT BE REPRODUCED OR DISCLOSED TO ANY THIRD PARTY IN ANY FORM WITHOUT THE PRIOR WRITTEN PERMISSION OF Jiangsu SOPO-CERE EQUIPMENT MANUFACTURING CO., LTD. THE OFFENDERS SHALL BEAR THE CORRESPONDING LEGAL RESPONSIBILITY.



端面坡口详图
Detailed drawing of end groove

1:1



过热器4A

受控文件

技术要求：

1.封头成型后最小壁厚不小于10.56mm.

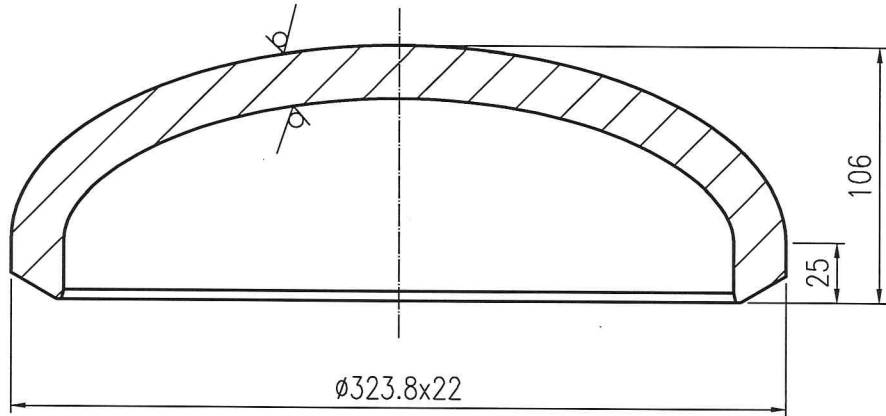
Technical note:

1. Minimum thickness of head after forming should no less than 11.44mm.

					江苏索普赛瑞装备制造有限公司 Jiangsu SOPO-CERE Equipment Manufacturing CO. Ltd.		
					SA-516 Gr.70		集箱封头 $\phi 273 \times 12$
							HEADER HEAD
MARK 标记	TOTAL NO. 处数	FILE NO. 更改文件号	SIGN 签名	DATE 日期	WEIGHT(kg) 重量	SCALE 比例	REV. 版次
DESIGN 设计	许大宇 2024.2.19		SERIAL# 产品编号		12.4	1:3	0
APPROVE 批准	赵晓峰 2024.2.19		24-1004GR4A/24-1005GR4A 24-1006GR4A/24-1007GR4A		TOTAL-PAGES 共 张	No.-PAGE 第 张	14SCG2402-1-1-9-1

本图纸及相关文件版权属于江苏索普赛瑞装备制造有限公司所有,任何单位和个人未经江苏索普赛瑞装备制造有限公司书面许可,不得以任何方式复制或扩散至第三方,违者应负相应法律责任。
THIS DRAWING AND RELEVANT DOCUMENT'S COPYRIGHT BELONGS TO SOPO-CERE EQUIPMENT MANUFACTURING CO., LTD. THEY MAY NOT BE REPRODUCED OR DISCLOSED TO ANY THIRD PARTY IN ANY FORM WITHOUT THE PRIOR WRITTEN PERMISSION OF JIANGSU SOPO-CERE EQUIPMENT MANUFACTURING CO., LTD. THE OFFENDERS SHALL BEAR THE CORRESPONDING LEGAL RESPONSIBILITY.

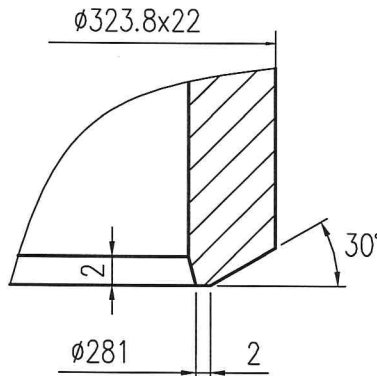
其余 $\sqrt{25}$



端面坡口详图
Detailed drawing of end groove

1:1

过热器的



受控文件

技术要求:

1. 封头成型后最小壁厚不小于19.36mm.

Technical note:

1. Minimum thickness of head after forming should no less than 19.36mm.

					江苏索普赛瑞装备制造有限公司 Jiangsu SOPO-CERE Equipment Manufacturing CO. Ltd.		
					SA-516 Gr.70		集箱封头 $\phi 323.8 \times 22$ HEADER HEAD
MARK 标记	TOTAL NO. 处数	FILE NO. 更改文件号	SIGN 签名	DATE 日期	WEIGHT(kg) 重量	SCALE 比例	
DESIGN 设计	许大宇 2024.2.19		SERIAL# 产品编号		25.9	1:3	0
APPROVE 批准	赵晓梅 2024.2.19		24-1004GR4A/24-1005GR4A 24-1006GR4A/24-1007GR4A		TOTAL-PAGES 共 张	No.-PAGE 第 张	14SCG2402-1-1-1-1

本图纸及相关文件版权属于江苏索普赛瑞装备制造有限公司所有,任何单位和个人未经江苏索普赛瑞装备制造有限公司书面许可,不得以任何方式复制或扩散至第三方,违者应负相应法律责任。
THIS DRAWING AND RELEVANT DOCUMENT'S COPYRIGHT BELONGS TO SOPO-CERE EQUIPMENT MANUFACTURING CO., LTD. THEY MAY NOT BE REPRODUCED OR DISCLOSED TO ANY THIRD PARTY IN ANY FORM WITHOUT THE PRIOR WRITTEN PERMISSION OF Jiangsu SOPO-CERE EQUIPMENT MANUFACTURING CO. LTD. THE OFFENDERS SHALL BEAR THE CORRESPONDING LEGAL RESPONSIBILITY.